

METAL ENCLOSUR WITH MCB & INDUSTRIAL SOCKET



Technical Data

- Texture finish, Powder coated to RAL9003.
- IP30 degree of protection.
- Suitable for flush and surface mounting.
- As per IS 8623.
- Available with Hager MCB and Bals (GmbH) sockets.

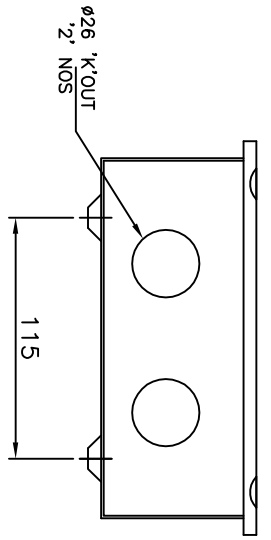
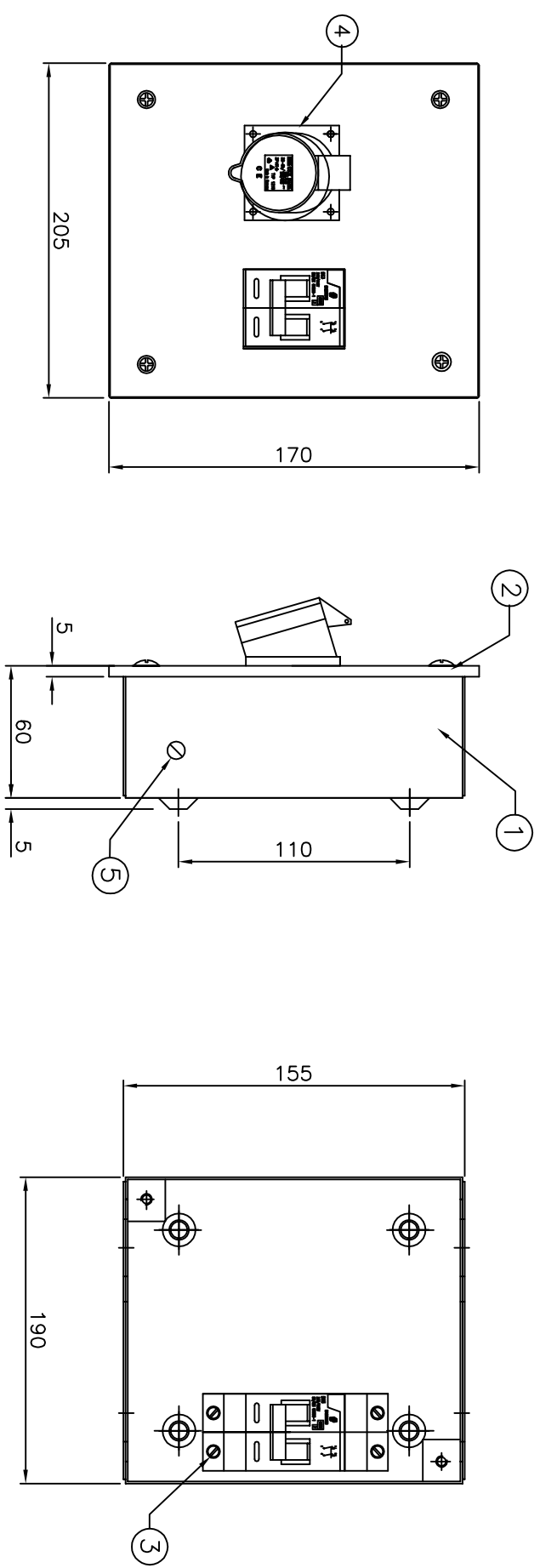
Range

- 2 Way 2 Modules, 4 Way 4 Module with 16 A to 125 A Sockets.

Dimensions

- Standardized considering the dimensions of Hager MCB and Bals Sockets.
-

ALL DIMENSIONS ARE IN mm.



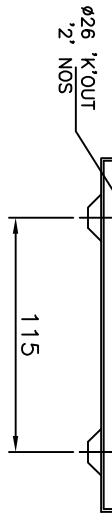
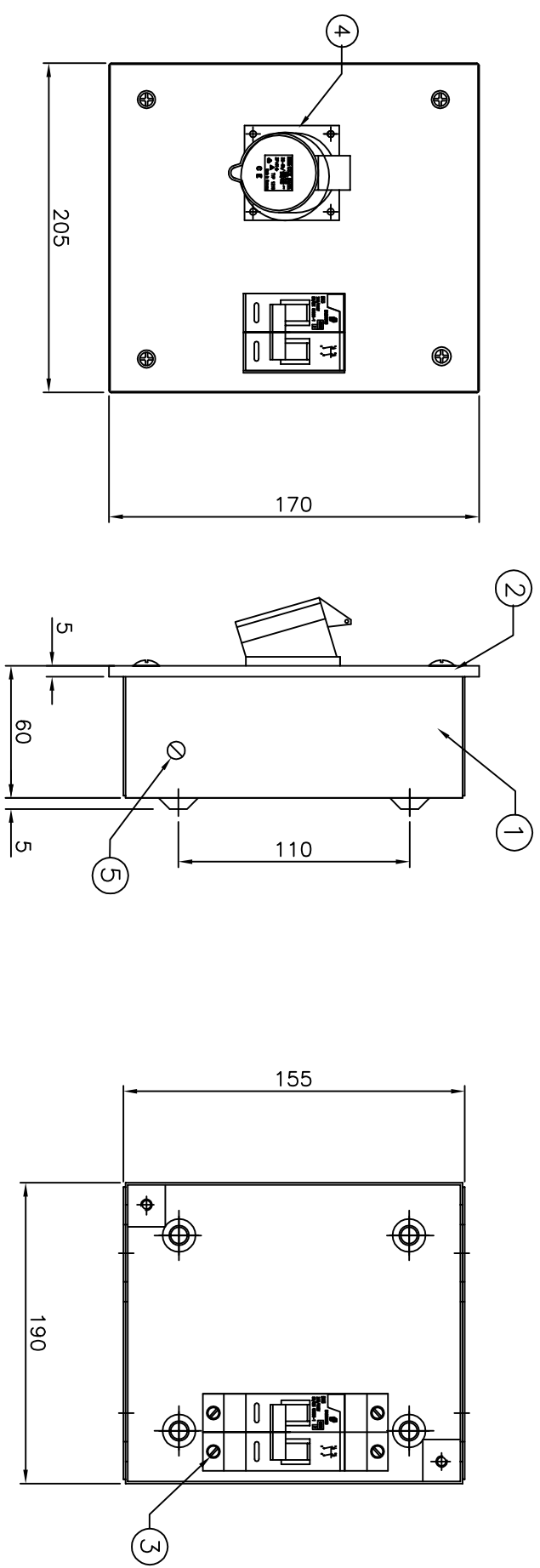
NOTE - 1) MATERIAL - 1.2mm THICK CRCA SHEET.
 2) DEGREE OF PROTECTION = IP-30
 3) FINISH - POWDER COATED IN RAL-9003

1. BOX
2. SHIELD
3. I/C DP MCB PROVISION
4. 16A 3PIN SOCKET(12117) PROVISION
5. EARTHING SCREW(BOTH SIDE)

<p style="text-align: center; font-size: 24pt; font-weight: bold;">EUROLEC ENERGY</p>		TRACED:	REF.:-
		DRAWN:-	GDB
<p style="text-align: center; font-size: 24pt; font-weight: bold;">EUROLEC ENERGY</p>		CHECKED:	
		APPROVED:	TITLE-(IP-30) P&S DB
<p style="text-align: center; font-size: 24pt; font-weight: bold;">EUROLEC ENERGY</p>		SCALE:	1 : 4
		DATE:	12.03.14
<p style="text-align: center; font-size: 24pt; font-weight: bold;">EUROLEC ENERGY</p>		16A 3PIN WITH DP MCB I/C	
		DRC.NO:-	
<p style="text-align: center; font-size: 24pt; font-weight: bold;">EUROLEC ENERGY</p>		EE-001	

NO	DATE	ALTERATION	DRN	CHD	DATE
4			3		

ALL DIMENSIONS ARE IN mm.



1. BOX
2. SHIELD
3. I/C DP MCB PROVISION
4. 32A 3PIN SOCKET(12310) PROVISION
5. EARTHING SCREW(BOTH SIDE)

NOTE - 1) MATERIAL - 1.2mm THICK CRCA SHEET.
 2) DEGREE OF PROTECTION = IP-30
 3) FINISH - POWDER COATED IN RAL-9003

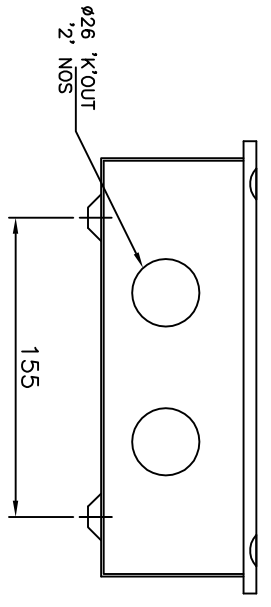
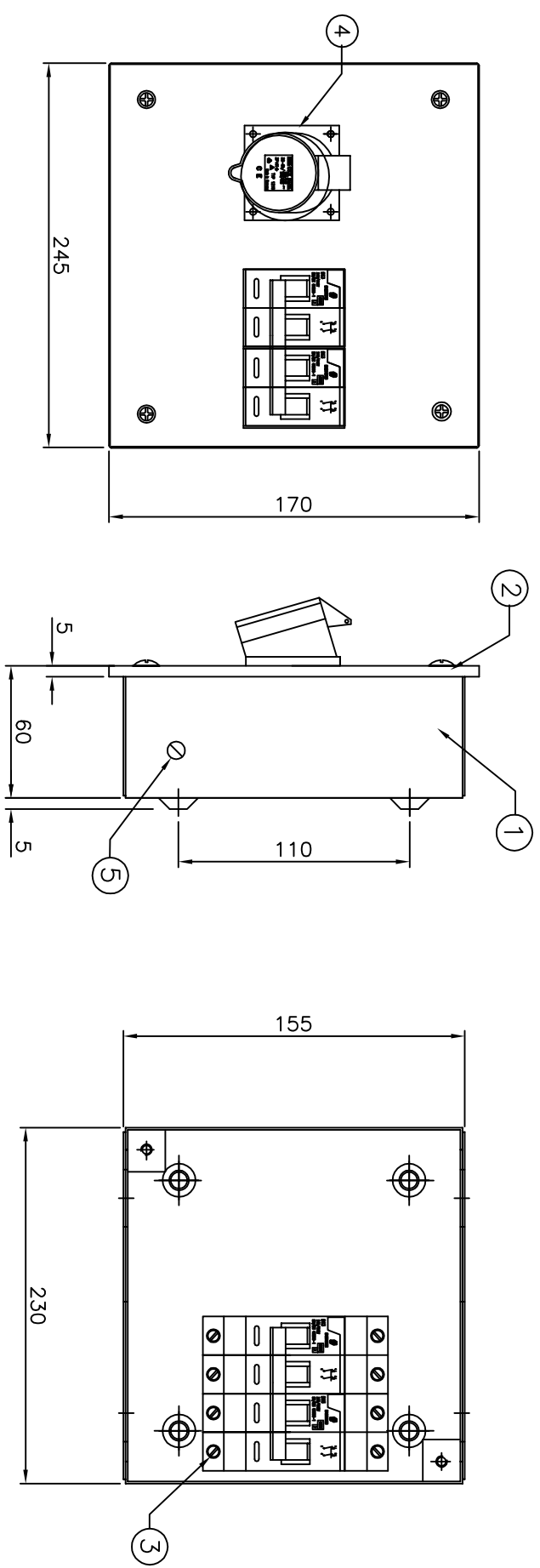
EUROLEC ENERGY

TRACED:		REF.:-	
DRAWN:-	GDB		
CHECKED:		TITLE- (IP-30) P&S DB	
APPROVED:		32A 3PIN WITH DP MCB I/C	
SCALE:	1 : 4	DRG.NO:-	
NO DATE	12.03.14	EE-002	
ALTERATION	DRN/CHD		
	3		

6 5 4 3 2 1

A B C D

ALL DIMENSIONS ARE IN mm.



1. BOX
2. SHIELD
3. I/C PROVISION 4 MODE
4. 16A SPIN SOCKET(12078) PROVISION
5. EARTHING SCREW(BOTH SIDE)

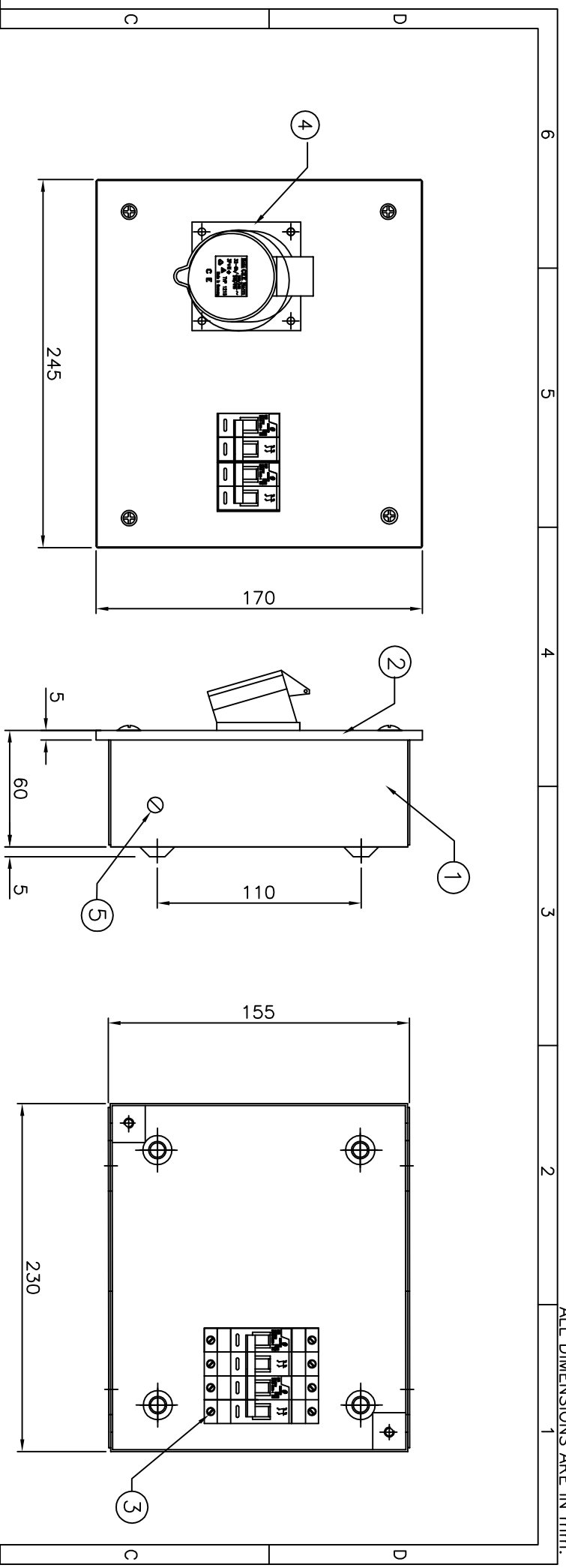
NOTE - 1) MATERIAL - 1.2mm THICK CRCA SHEET.
 2) DEGREE OF PROTECTION = IP-30
 3) FINISH - POWDER COATED IN RAL-9003

<p style="text-align: center;">EUROLEC ENERGY</p>		TRACED:	REF.:-	
		DRAWN:-	GDB	
<p style="text-align: center;">EUROLEC ENERGY</p>		CHECKED:	TITLE-(IP-30) P&S DB	DWG.NO:-
		APPROVED:	16A SPIN WITH FP MCB I/C	EE-003
NO DATE	ALTERATION	DRN/CHD	DATE:	
		3	12.03.14	

6 5 4 3 2 1

A B C D

ALL DIMENSIONS ARE IN mm.



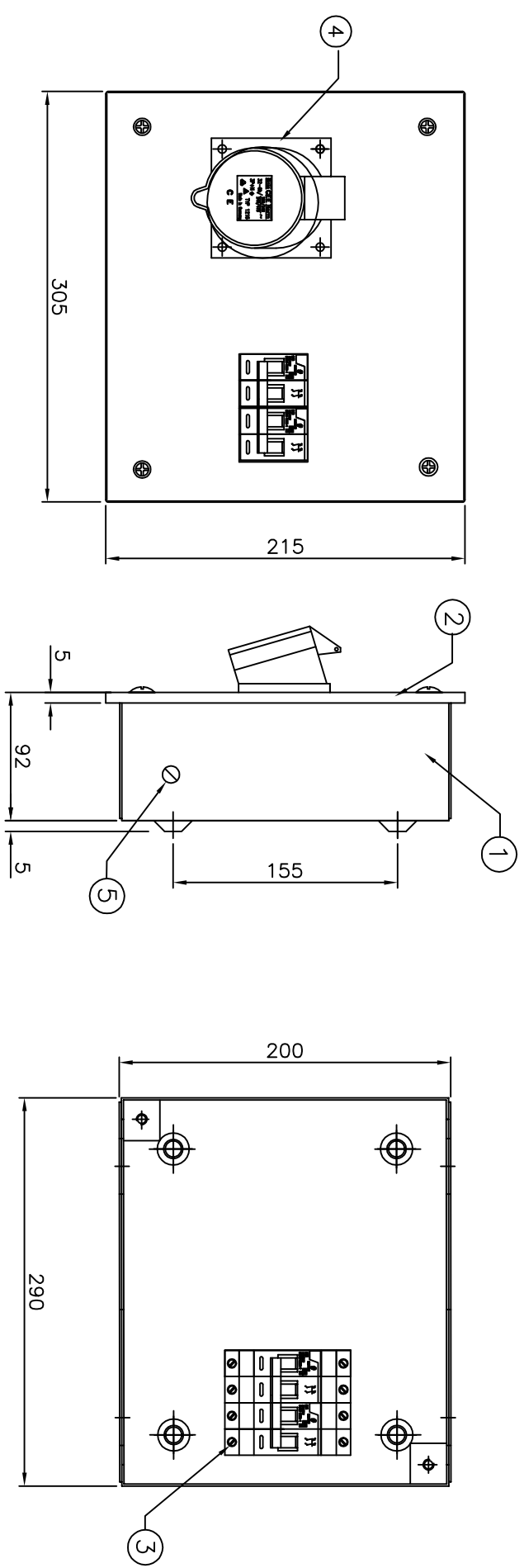
1. BOX
2. SHIELD
3. I/C 4P MCB PROVISION
4. 32A 5PIN SOCKET(1215) PROVISION
5. EARTHING SCREW(BOTH SIDE)

NOTE - 1) MATERIAL - 1.2mm THICK CRCA SHEET.
 2) DEGREE OF PROTECTION = IP-30
 3) FINISH - POWDER COATED IN RAL-9003

<p style="text-align: center; font-size: 24px; font-weight: bold;">EUROLEC ENERGY</p>		TRACED:	REF.:-	
		DRAWN:-	GDB	
<p style="text-align: center; font-size: 24px; font-weight: bold;">EUROLEC ENERGY</p>		CHECKED:	TITLE-(IP-30) P&S DB	
		APPROVED:	32A 5PIN WITH 4P MCB I/C	
NO DATE	ALTERATION	DRN/CHD	DATE:	DWG.NO:-
		3	12.03.14	EE-004

6 5 4 3 2 1

ALL DIMENSIONS ARE IN mm.



NOTE - 1) MATERIAL - 1.2mm THICK CRCA SHEET.
 2) DEGREE OF PROTECTION = IP-30
 3) FINISH - POWDER COATED IN RAL-9003

1. BOX
2. SHIELD
3. I/C 4P MCB PROVISION
4. 63A 5PIN SOCKET(12380) PROVISION
5. EARTHING SCREW(BOTH SIDE)

EUROLEC ENERGY

TRACED:	REF.:-	
DRAWN:- GDB		
CHECKED:	TITLE-(IP-30) P&S DB	DWG.NO:-
APPROVED:	63A 5PIN WITH 4P MCB I/C	EE-005
SCALE: 1 : 4		
DATE: 12.03.14		

NO	DATE	ALTERATION	DRN	CHD	DATE

6 5 4 3 2 1

A B C D